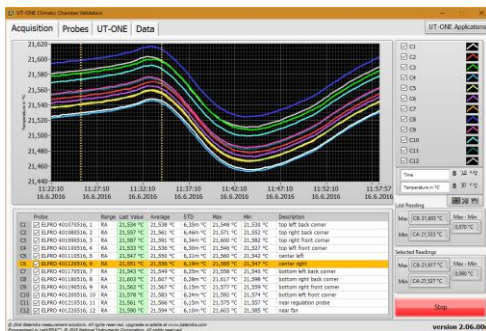


UT-ONE S12A

12-Channel Thermometer Readout

Highlights



- ❖ 12 channel temperature measurement
- ❖ Ideal for **validation of climatic chambers**
- ❖ Large-volume thermometer calibrations
- ❖ High accuracy, stability and repeatability
- ❖ Platinum resistance thermometers
- ❖ Thermistors
- ❖ Thermocouples
- ❖ Banana connectors for maximum flexibility
- ❖ USB communication interface
- ❖ GPIB+RS232 interface option
- ❖ Power supply over USB
- ❖ Single or continuous measurement mode
- ❖ Standard and custom probe characterization
- ❖ Low power consumption
- ❖ Acquisition software and LabVIEW drivers available free of charge

Specifications Summary

Type	Range	Accuracy
Platinum resistance thermometers	-200 °C to 960 °C (0 to 800 Ω) *	±0.006 °C **
Thermistors	-100 °C to 200 °C (0 to 40 kΩ) *	±0.001 °C **
Thermocouples	-200 °C to 1800 °C (±100 mV) *	±0.1 °C **
Internal CJC digital thermometer	5 °C to 45 °C	±0.4 °C

* Readout only, actual range may be limited by probe specification

** Readout only, typical value. Visit our website www.batemika.com to get detailed specification.

Ordering Information

Description	Order code
UT-ONE S12A 12-channel thermometer readout	BH-B007
LabVIEW driver and applications	BS-B005
GPIB+RS232 interface option*	BH-B009
Plastic carrying case *	BA-G012
Elpro Pt-100 probe for climatic chamber validation*	BH-P035
AccuMac temperature probes *	BH-P030
R210A reference resistor *	BH-B006

* Optional accessory